

Product information sheet SOLENTA-S Senso Lever left

Item no. 523127

Benefits



- Semi-professional design with elevated user convenience
- Manual or hands-free Start-Stop mode with sensor technology
- Near field sensor detection in hose arm avoids unintended activation
- Lever left version for a perfect match with the bowl position
- High-quality stainless steel hose cover for more stability, ease of movement and cleaning
- Pull-down with dual spray function and magnetic holder: easy switch from aerated stream to powerful rinse spray
- PVD steel - easy to clean, stain and wear resistant

Colours



Available colours:

PVD steel

PVD PVD steel

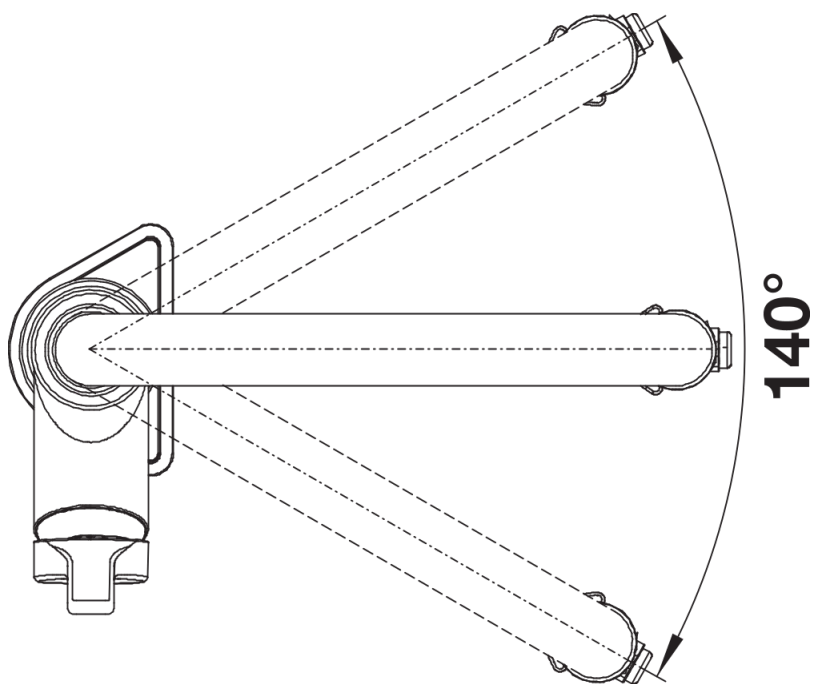
Planning information

- Ready to be connected to 230 V with power supply unit

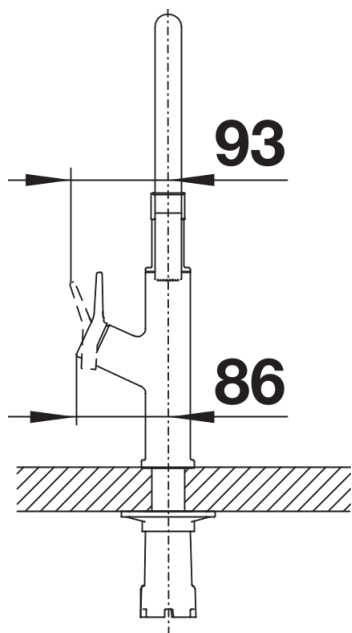
Scope of supply

- Prepared for connection to 230V with mains unit
- 140° swivel spout for greater reach
- Ø 35mm tap hole required
- With ceramic disk cartridge
- Metal-sheathed spray hose
- Flexible connection pipes with a length of 450 mm and $\frac{3}{8}$ " nut for particularly easy and secure installation
- Patented jet regulator for markedly reduced scaling
- Stabilising plate to increase the stability of the tap when fitted in stainless steel sinks
- With non-return valve and thus guaranteed against reflux in accordance with EN 1717
- LGA approved
- DVGW approved

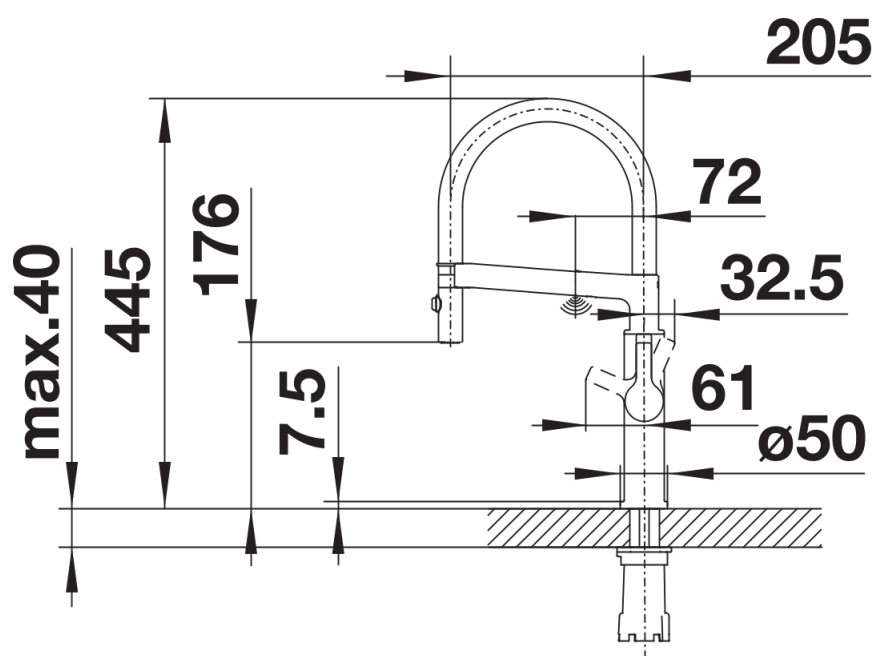
Details



Swivel range



Side view hand gear 2D



Side view